

WN Series New



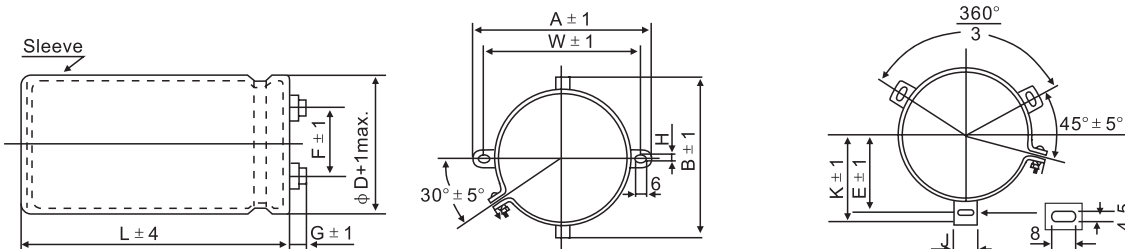
- Screw-mount terminal type
- Endurance with ripple current :85°C 2000 hours
- RoHS Compliant

■ 規格表 SPECIFICATIONS

項目 Items	特性參數 Characteristics			
使用溫度範圍 Category Temperature Range	-25~+85°C			
額定工作電壓範圍 Rated Voltage Range	550V、600V			
電容量允許偏差 Capacitance Tolerance	±20% (M) (at 20°C,120Hz)			
漏電流 Leakage Current	I≤0.01CV or 5mA, which is smaller after application of rated voltage for 5 minutes. I:漏電流 (μA)、C: 靜電容量 (μF)、額定電壓 (V)			
損耗角正切值tan δ Dissipation Factor	Rated voltage(V)	550	600	(at 20°C,120Hz)
	tan δ (Max.)	0.24	0.30	
低溫特性 Low Temperature Characteristics (Max.Impedance Ratio)	電容器低溫阻抗比值，不應超過下表所列出的值			
	Rated voltage(V)	550	600	(at 120Hz)
	Z(-25°C)/Z(+20°C)	8	8	
絕緣阻抗 Insulation Resistance	在螺絲端子與固定架之間施加直流電壓500V，其絕緣阻抗值不低於100MΩ。 The insulation resistance shall be more than 100MΩ during application of DC 500V voltage between terminal and bracket.			
絕緣耐電壓 Insulation Withstanding Voltage	在螺絲端子與固定架之間施加交流電壓2000V，1分鐘，無電氣性能異常。 There shall not be electrical damage during application of AC 2000V voltage between terminal and bracke for 1 minute.			
耐久性 Endurance	施加額定工作電壓和額定紋波電流，恢復到20°C後，產品性能應滿足以下要求 The following specifications shall be satisfied when the capacitors are restored to 20°C after application of rated voltage with rated ripple current.			
	Capacitance change	≅ ±20% of the initial value		
	D.F.(tan δ)	≅300% of the specified value		
	Leakage current	≅The specified value		
高溫儲存特性 Shelf Life	85°C放置500小時，恢復20°C後，產品性能應滿足以下要求 The following specifications shall be satisfied when the capacitors are restored at 20°C after exposing them for 500 hours at 85°C without voltage applied.			
	Capacitance change	≅ ±20% of the initial value		
	D.F.(tan δ)	≅300% of the specified value		
	Leakage current	≅The initial specified value		

■ 外形圖 DIMENSIONS (mm)

- Standard Terminal Type: S(Φ40)



ΦD	A	B	W	H	F	G
35	58	44	48	3.5	12.7	6.0
50	78	64	68	4.5	22.4	6.0
64	90	76	80	4.5	28.0	6.0

ΦD	E	K	F	J
50	32.5	37.0	22.4	14.0
64	38.1	43.5	28.0	14.0

WN Series

WN Series

■ 尺寸與最大紋波電流一覽表 STANDARD RATINGS

WV(V) Cap(μF)	550(2L)			600(2M)		
120	35*50 0.72			35*80 0.86		
180	35*80 1.12			35*80 1.15		
220	35*80 1.25			35*100 1.27		
270	35*100 1.53			35*120 1.55	50*65 1.50	64*75 1.98
330	35*120 1.82	50*65 1.69			50*75 1.71	64*85 2.27
390		50*75 1.92	64*75 2.24		50*85 1.94	64*95 2.51
470		50*85 2.21	64*85 2.50		50*95 2.25	64*115 2.96
560		50*95 2.52	64*95 2.92			
680			64*115 3.42	← Case Size: ΦD×L(mm) ← Rated Ripple current:(Arms) at 85°C, 120Hz		

■ 紋波電流補正系數 RATED RIPPLE CURRENT COEFFICIENT

● 頻率系數 Frequency Coefficient

Frequency (Hz)	50	120	300	1k	10k	100k
550V	0.77	1.00	1.16	1.32	1.43	1.48
600V	0.76	1.00	1.07	1.30	1.41	1.45