



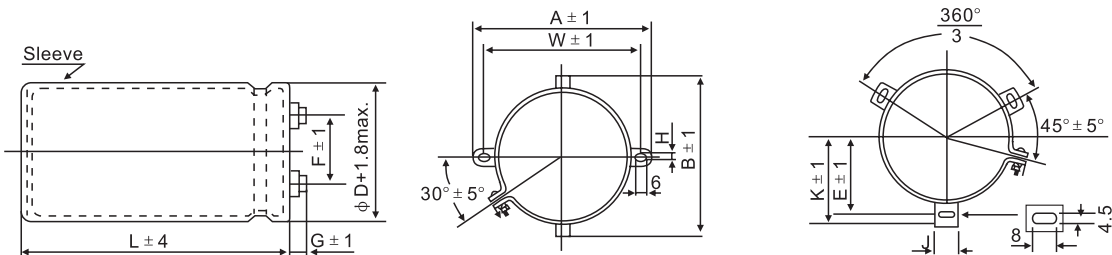
WH Series

- High ripple capability
- Endurance with ripple current : 105°C 5,000 hours
- RoHS Compliant

■ 規格表 SPECIFICATIONS

項目 Items	特性參數 Characteristics	
使用溫度範圍 Category Temperature Range	-25 ~ +105°C	
額定工作電壓範圍 Rated Voltage Range	350 ~ 450V	
電容量允許偏差 Capacitance Tolerance	±20% (M) (at 20°C, 120Hz)	
漏電流 Leakage Current	I ≤ 0.02CV or 5mA, which is smaller application of rated voltage for 5 minutes. 施加額定工作電壓5分鐘後讀數，二者取較小值。 I: 漏電流 (μA)、C: 靜電容量 (μF)、額定電壓 (V)	
損耗角正切值 tan δ Dissipation Factor	0.15 max (at 20°C, 120Hz)	
低溫特性 Low Temperature Characteristics (Max. Impedance Ratio)	電容器低溫容量比值，應符合以下所列出的值 Capacitance change : $\frac{C(-25^{\circ}\text{C})}{C(+20^{\circ}\text{C})} \geq 0.7$ (at 120Hz)	
絕緣阻抗 Insulation Resistance	在螺絲端子與固定架之間施加直流電壓500V，其絕緣阻抗值不低於100MΩ。 The insulation resistance shall be more than 100MΩ during application of DC 500V voltage between terminal and bracket.	
絕緣耐電壓 Insulation Withstanding Voltage	在螺絲端子與固定架之間施加交流電壓2000V，1分鐘，無電氣性能異常。 There shall not be electrical damage during application of AC 2000V voltage between terminal and bracke for 1 minute.	
耐久性 Endurance	施加額定工作電壓和額定紋波電流，恢復到20°C後，產品性能應滿足以下要求 The following specifications shall be satisfied when the capacitors are restored to 20°C after application of rated voltage with rated ripple current.	
	Capacitance change	≅ ±20% of the initial value
	D.F. (tan δ)	≅ 200% of the initial specified value
高溫儲存特性 Shelf Life	105°C放置1000小時，恢復20°C後，產品性能應滿足以下要求 The following specifications shall be satisfied when the capacitors are restored at 20°C after exposing them for 500 hours at 105°C without voltage applied.	
	Capacitance change	≅ ±20% of the initial value
	D.F. (tan δ)	≅ 200% of the initial specified value
	Leakage cunent	≅ The initial specified value

■ 外形圖 DIMENSIONS (mm)



ΦD	A	B	W	F	G
64	86	76	76	28.0	10.0
76	98	90	87	31.5	10.0
90				31.5	10.0

ΦD	E	K	F	J
64	38.1	43.5	28.0	14.0
76	43.5	50.0	31.5	14.0
90	50.8	56.5	31.5	16.0

WH Series

## WH Series

## ■ 尺寸與最大紋波電流一覽表 STANDARD RATINGS

WV (V) Items ΦDXL (mm)	350(2V)		400(2G)		450(2W)	
	Capacitance ( $\mu$ F) 20°C, 120Hz	Rated ripple current (Arms) 105°C, 120Hz	Capacitance ( $\mu$ F) 20°C, 120Hz	Rated ripple current (Arms) 105°C, 120Hz	Capacitance ( $\mu$ F) 20°C, 120Hz	Rated ripple current (Arms) 105°C, 120Hz
64 × 100	2,700	8.5	2,200	7.7	1,800	6.8
64 × 120	3,300	10.1	2,700	9.1		
64 × 130	3,900	11.7	3,300	10.7	2,200	8.2
64 × 155	4,700	13.4	3,900	12.0	2,700	9.4
76 × 120	4,700	13.0	3,900	11.9	2,700	10.3
76 × 140	5,600	16.1	4,700	14.7	3,300	12.7
76 × 160	6,800	18.7	5,600	18.3	3,900	13.7
					4,700	18.2
90 × 120	5,600	15.5	4,700	15.4	3,900	13.4
90 × 140	6,800	18.5	5,600	18.8	4,700	18.8
90 × 160	8,200	21.9	6,800	27.9	5,600	20.2
90 × 160	10,000	24.8				

## ■ 紋波電流補正係數 RATED RIPPLE CURRENT COEFFICIENT

## ● 頻率係數 Frequency coefficient

Frequency (Hz)	50(60)	120	500	1k	10k
350~450WV	0.7	1.0	1.1	1.3	1.4

## ● 周圍溫度係數 Temperature coefficient

Ambient Temperature(°C)	40	60	85	105
Coefficient	2.4	2.1	2	1