

WF Series

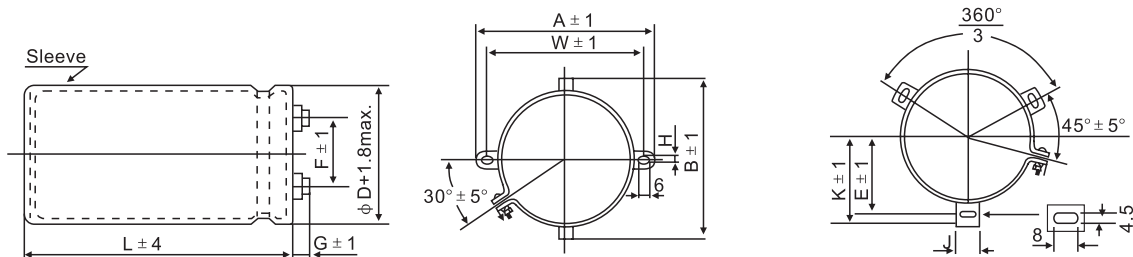


- High ripple capability
- Endurance with ripple current :85°C 5,000 hours
- RoHS Compliant

■ 規格表 SPECIFICATIONS

項目 Items	特性參數 Characteristics			
使用溫度範圍 Category Temperature Range	-25 ~ +85°C			
額定工作電壓範圍 Rated Voltage Range	350 ~ 450V			
電容量允許偏差 Capacitance Tolerance	±20% (M) (at 20°C, 120Hz)			
漏電流 Leakage Current	$I \leq 0.02CV$ or 5mA, which is smaller after application of rated voltage for 5 minutes. 施加額定工作電壓5分鐘後讀數，二者取較小值。 I:漏電流 (μA)、C: 靜電容量 (μF)、額定電壓 (V)			
損耗角正切值 $\tan \delta$ Dissipation Factor	0.25 max (at 20°C, 120Hz)			
低溫特性 Low Temperature Characteristics (Max. Impedance Ratio)	電容器低溫阻抗比值，應符合以下所列出的值 Capacitance change : <table border="1" style="display: inline-table; vertical-align: middle;"><tr><td>$C(-25^\circ\text{C})/C(+20^\circ\text{C})$</td><td>$\geq 0.7$</td><td>(at 120Hz)</td></tr></table>	$C(-25^\circ\text{C})/C(+20^\circ\text{C})$	≥ 0.7	(at 120Hz)
$C(-25^\circ\text{C})/C(+20^\circ\text{C})$	≥ 0.7	(at 120Hz)		
絕緣阻抗 Insulation Resistance	在螺絲端子與固定架之間施加直流電壓500V，其絕緣阻抗值不低於100MΩ。 The insulation resistance shall be more than 100MΩ during application of DC 500V voltage between terminal and bracket.			
絕緣耐電壓 Insulation Withstanding Voltage	在螺絲端子與固定架之間施加交流電壓2000V，1分鐘，無電氣性能異常。 There shall not be electrical damage during application of AC 2000V voltage between terminal and bracke for 1 minute.			
耐久性 Endurance	施加額定工作電壓和額定紋波電流，恢復到20°C後，產品性能應滿足以下要求 The following specifications shall be satisfied when the capacitors are restored to 20°C after application of rated voltage with rated ripple current.			
	Capacitance change <table border="1" style="display: inline-table; vertical-align: middle;"><tr><td>$\leq \pm 20\%$ of the initial value</td></tr></table>	$\leq \pm 20\%$ of the initial value		
	$\leq \pm 20\%$ of the initial value			
D.F. ($\tan \delta$) <table border="1" style="display: inline-table; vertical-align: middle;"><tr><td>$\leq 200\%$ of the initial specified value</td></tr></table>	$\leq 200\%$ of the initial specified value			
$\leq 200\%$ of the initial specified value				
高溫儲存特性 Shelf Life	85°C放置500小時，恢復20°C後，產品性能應滿足以下要求 The following specifications shall be satisfied when the capacitors are restored at 20°C after exposing them for 500 hours at 85°C without voltage applied.			
	Capacitance change <table border="1" style="display: inline-table; vertical-align: middle;"><tr><td>$\leq \pm 20\%$ of the initial value</td></tr></table>	$\leq \pm 20\%$ of the initial value		
	$\leq \pm 20\%$ of the initial value			
D.F. ($\tan \delta$) <table border="1" style="display: inline-table; vertical-align: middle;"><tr><td>$\leq 200\%$ of the initial specified value</td></tr></table>	$\leq 200\%$ of the initial specified value			
$\leq 200\%$ of the initial specified value				
Leakage cunent <table border="1" style="display: inline-table; vertical-align: middle;"><tr><td>\leq The initial specified value</td></tr></table>	\leq The initial specified value			
\leq The initial specified value				

■ 外形圖 DIMENSIONS (mm)



ΦD	A	B	W	F	G
50	78	64	68	22.4	6.0
64	90	76	80	28.0	6.0
76	104.5	90	93.5	31.5	5.0

ΦD	E	K	F	J
50	32.5	37.0	22.4	14.0
64	38.1	43.5	28.0	14.0
76	44.5	50.0	31.5	14.0

WF Series

■ 尺寸與最大紋波電流一覽表 STANDARD RATINGS

WV (V) Items Φ DXL (mm)	350(2V)		400(2G)		450(2W)	
	Capacitance (μ F) 20°C, 120Hz	Rated ripple current (Arms) 85°C, 120Hz	Capacitance (μ F) 20°C, 120Hz	Rated ripple current (Arms) 85°C, 120Hz	Capacitance (μ F) 20°C, 120Hz	Rated ripple current (Arms) 85°C, 120Hz
50 × 100	2,200	7.9	1,800	6.7	1,200	5.2
50 × 120	2,700	9.1	2,200	7.5	1,800	7.3
50 × 140	3,300	10.2	2,700	9.1	2,200	8.2
64 × 120	3,900	12.0	3,300	10.5	2,700	9.8
64 × 140	4,700	14.0	3,900	12.0	3,300	11.0
64 × 170	5,600	16.2	4,700	15.0	3,900	13.0
64 × 190	6,800	20.0	5,600	18.0	4,700	16.0
76 × 120	5,600	16.0	4,700	14.0	3,900	13.0
76 × 140	6,800	18.2	5,600	15.0	4,700	15.0
76 × 160	8,200	22.0	6,800	20.0	5,600	18.0
76 × 190	10,000	25.0	8,200	21.0	6,800	19.0

■ 紋波電流補正係數 RATED RIPPLE CURRENT COEFFICIENT

- 頻率係數 Frequency Coefficient

Frequency (Hz)	50	120	300	1k	3k
Coefficient	0.8	1.0	1.1	1.3	1.4